

Bluetooth Connectivity Test Products



User's guide
Version 2.00

boosting wireless efficiency

Notice Every effort was made to ensure that the information in this document was accurate at the time of printing. However, information is subject to change without notice, and Willtek reserves the right to provide an addendum to this document with information not available at the time this document was created.

Copyright © Copyright 2007 Willtek Communications GmbH. All rights reserved. Willtek and its logo are trademarks of Willtek Communications. All other trademarks and registered trademarks are the property of their respective owners. No part of this guide may be reproduced or transmitted electronically or otherwise without written permission of the publisher.

Trademarks Willtek is a trademark of Willtek Communications GmbH in Germany and other countries.

Specifications, terms and conditions are subject to change without notice. All trademarks and registered trademarks are the property of their respective companies.

Ordering information This guide is issued as part of the **Bluetooth Connectivity Test Products**. The ordering number for a published user's guide is M 292 018. The ordering numbers for the products are as follows:

Table 1 Willtek's Bluetooth products and ordering numbers

Product designation	Ordering number
4941 Bluetooth Connectivity Hardware	M 248 511
4921 RF Shield	M 248 346
3189 Bluetooth Connectivity Test Package	M 248 512
4489 Bluetooth Connectivity Test Package	M 248 510

Federal Communications Commission (FCC) Notice

This product was tested and found to comply with the limits for a spread spectrum transmitter, pursuant to Part 15C of the FCC Rules. These limits are designed to provide reasonable protection against harmful interference when the equipment is operated in a commercial environment. This product generates, uses, and can radiate radio frequency energy and, if not installed and used in accordance with the instruction manual, may cause harmful interference to radio communications. Operation of this product in a residential area is likely to cause harmful interference, in which case you will be required to correct the interference at your own expense.

The authority to operate this product is conditioned by the requirements that no modifications be made to the equipment unless the changes or modifications are expressly approved by Willtek.

EMC Directive Compliance This product was tested and conforms to the EMC requirements for electromagnetic compatibility as expressed in EN 301 489-1/-17.

Table of Contents

About This Guide		v
	Purpose and scope.....	vi
	Assumptions.....	vi
	Related information.....	vi
	Technical assistance.....	vii
	Conventions.....	vii

Safety Notes		ix
	Electricity.....	x
	Product.....	x

Chapter 1	Overview	1
	About the Bluetooth Connectivity Test solution.....	2
	Prerequisites.....	2
	Features and capabilities.....	3
	Physical description.....	3

Chapter 2	Installation	5
	Scope of delivery.....	6
	Software requirements.....	7
	Hardware requirements.....	7
	Setting up the hardware.....	7
	Installing the software.....	9
	4400 Mobile Phone Tester Series.....	9
	3100 Mobile Fault Finder.....	10

Chapter 3	Using the Bluetooth Connectivity Test products with Lector or Scriptor	11
	Enabling and disabling Bluetooth tests in Lector and Scriptor	12
	Carrying out a Bluetooth test with Lector or Scriptor	13
	Troubleshooting Bluetooth tests with Lector and Scriptor	13
<hr/>		
Chapter 4	SCPI Commands	15
	Configuration commands	16
	Status commands	17
	Control commands	17
<hr/>		
Chapter 5	Direct access via RS-232	19
	General	20
	Configuring the Bluetooth adapter	20
	Requesting device status information	20
	General control	21
<hr/>		
Appendix A	Warranty and Repair	23
	Warranty information	24
	Equipment return instructions	25
<hr/>		
Appendix B	End-User License Agreement	27
<hr/>		
Publication History		29

About This Guide

- "Purpose and scope" on page vi
- "Assumptions" on page vi
- "Related information" on page vi
- "Technical assistance" on page vii
- "Conventions" on page vii

Purpose and scope

The purpose of this guide is to help you successfully use the Bluetooth Connectivity Test solution features and capabilities. This guide includes task-based instructions that describe how to install, configure, use, and troubleshoot the Bluetooth Connectivity Test solution. Additionally, this guide provides a description of Willtek's warranty, services, and repair information, including terms and conditions of the licensing agreement.

Assumptions

This guide is intended for novice, intermediate, and experienced users who want to use the Bluetooth Connectivity Test solution effectively and efficiently. We are assuming that you have basic computer and mouse/track ball experience and are familiar with basic telecommunication concepts and terminology.

Related information

Use this guide in conjunction with the following information:

4921 RF Shield user's guide, ordering number M 292 016

3100 Mobile Fault Finder user's guide, ordering number M 290 111

4400 Mobile Phone Tester series user's guides:

GSM and EDGE Options, ordering number M 290 011

GSM/GPRS and EDGE Options, ordering number M 293 016

WCDMA Options, ordering number M 294 249

CDMA Options, ordering number M 292 010

1xEV-DO Options, ordering number M 294 287

TD-SCDMA Options, ordering number M 294 251

Technical assistance

If you need assistance or have questions related to the use of this product, call Willtek's support. You can also contact Willtek by e-mail at customer.support@willtek.com.

Table 1 Technical support contact

Region	Phone number	Fax number
Europe, Middle East, Asia, Africa	+49 (0)89 99641 311	+49 (0)89 99641 440
Americas	+1 973 386 9696	+1 973 386 9191
China	+86 21 5836 6669	+86 21 5835 5238

Conventions

This guide uses naming conventions and symbols, as described in the following tables.




Table 2 Typographical conventions

Description	Example
User interface actions appear in this typeface .	On the Status bar, click Start .
Buttons or switches that you press on a unit appear in this TYPEFACE .	Press the ON switch.
Code and output messages appear in this typeface.	All results okay
Text you must type exactly as shown appears in this typeface .	Type: a : \set.exe in the dialog box.
Variables appear in this <typeface>.	Type the new <hostname>.
Book references appear in this typeface .	Refer to Newton's Telecom Dictionary
A vertical bar means "or": only one option can appear in a single command.	platform [a b e]
Square brackets [] indicate an optional argument.	login [platform name]
Slanted brackets < > group required arguments.	<password>

Table 3 Keyboard and menu conventions

Description	Example
A plus sign + indicates simultaneous keystrokes.	Press Ctrl+s
A comma indicates consecutive keystrokes.	Press Alt+f,s
A slanted bracket indicates choosing a submenu from menu.	On the menu bar, click Start > Program Files.

Table 4 Symbol conventions

	This symbol represents a general hazard.
	This symbol represents a risk of electrical shock.
	NOTE This symbol represents a note indicating related information or tip.

Safety Notes

This chapter provides the safety notes for the Bluetooth Connectivity Test solution.

Electricity

**Warning**

Use only the supplied AC adapter. Use of unauthorized power adapter is not recommended. Electrical shock may result.

**Warning**

Do not kink or crease the power cable or place heavy objects on the power cable. Fire can result from damaged power cables.

**Warning**

Do not handle power plug and adapter with wet hands. Electrical shock may result.

**Warning**

Immediately power off the product and unplug the AC adapter if smoke or odors emit from the product and adapter. Fire can result from improper use.

**Warning**

Immediately power off the product and unplug the AC adapter if water or other liquids are present. Fire can result from improper use.

Product

**Warning**

The Bluetooth adapter meets the RS-232 standards. Do not wire with non-standard products. Damage to your products may result from improper use.

**Warning**

Keep away from harsh environments including humid, dusty, and smoky areas. Damage to your products may result from improper use.

**Warning**

Do not use excessive force on the buttons or attempt to disassemble the device. Damage to your products may result from improper use.

**Warning**

Do not drop or subject the device to impact. Damage to your products may result from improper use.



Warning

Do not place heavy objects on the product. Damage to your products may result from improper use.

Overview

1

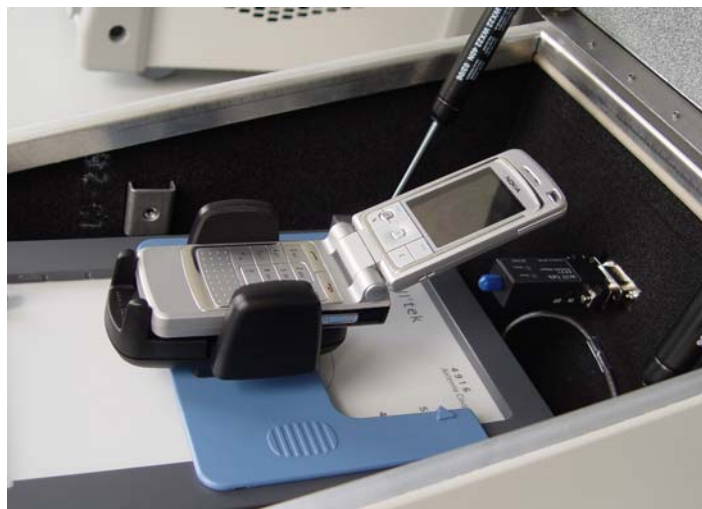
This chapter provides a general description of the Bluetooth Connectivity Test solution. Topics discussed in this chapter include the following:

- ["About the Bluetooth Connectivity Test solution" on page 2](#)
- ["Prerequisites" on page 2](#)
- ["Features and capabilities" on page 3](#)
- ["Physical description" on page 3](#)

About the Bluetooth Connectivity Test solution

The 4921 RF Shield equipped with the 4941 Bluetooth Connectivity Hardware allows you to carry out tests on both the cellular and the Bluetooth portion of the mobile phone. An RS-232 connector on the back plane of the RF Shield, together with properly shielded cables, allows you to control the Bluetooth adapter that is part of the Bluetooth Connectivity Hardware. A few simple commands and responses suffice to ensure that both the receiver and the transmitter of the Bluetooth portion in the mobile phone are working correctly.

Willtek also offers Bluetooth Connectivity Test Packages for the 4400 and the 3100. These include the hardware and enable software macros for Bluetooth testing from within the RAPID! evaluation tests delivered with the 4400 and the 3100.



Prerequisites

The 4941 Bluetooth Connectivity Hardware has been designed for use with the 4921 RF Shield.

The 4489 Bluetooth Connectivity Test Package (including the 4941 Bluetooth Connectivity Hardware) additionally requires a 4400 Series Mobile Phone Tester with software version 12.00 or higher.

The 3189 Bluetooth Connectivity Test Package (including the 4941 Bluetooth Connectivity Hardware) additionally requires a 3100 Mobile Fault Finder with software version 12.00 or higher.

Features and capabilities

Tests the function of the Bluetooth device within mobile phones.

Physical description

The 4941 Bluetooth Connectivity Hardware consists of a 4921 RF Shield back-plane with an RS-232 connector, the Bluetooth adapter with RS-232 connector, a power supply cable and a control cable.

The 4489 Bluetooth Connectivity Test Package consists of the 4941 Bluetooth Connectivity Hardware plus a software license for Bluetooth tests running on a 4400 (under remote control or RAPID!). The package is limited to usage on one 4400 series instrument.

The 3189 Bluetooth Connectivity Test Package consists of the 4941 Bluetooth Connectivity Hardware plus a software license for Bluetooth tests running on a 3100 (under remote control or 7310 Lector). The package is limited to usage on a single 3100 Mobile Fault Finder.

Installation

2

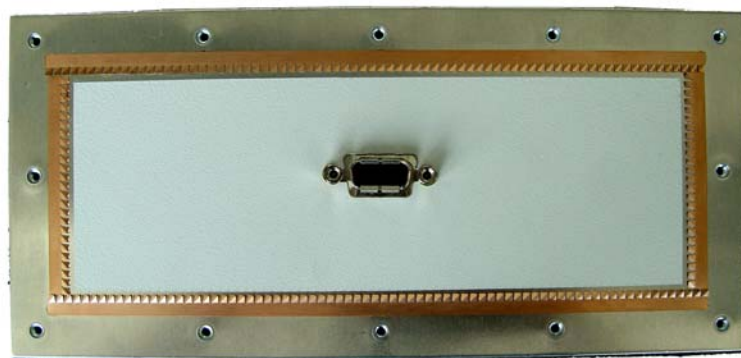
This chapter describes how to install the Bluetooth Connectivity Test solution. The topics discussed in this chapter are as follows:

- ["Scope of delivery" on page 6](#)
- ["Software requirements" on page 7](#)
- ["Hardware requirements" on page 7](#)
- ["Setting up the hardware" on page 7](#)
- ["Installing the software" on page 9](#)

Scope of delivery

When unpacking the Bluetooth Connectivity Test solution, ensure that you do not miss any of the following items:

- Bluetooth adapter
- Serial and power supply cable
- AC/DC power converter
- The backplane for the 4921 RF Shield with 15-pin D-sub connectors (female) on both sides (the backplane may already be installed if you ordered your Bluetooth Connectivity Test product with the 4921 RF Shield)
- Getting started manual
- User's guide (on CD)



Software requirements

In order to control the Bluetooth adapter from either the 3100 or the 4400, you will need software version 12.00 to be installed on these instruments.

To control the Bluetooth adapter directly from a PC, you will need appropriate driver software. This software is not included in the Bluetooth Connectivity Hardware and related products. The commands for direct control are described in [Chapter 5 "Direct access via RS-232"](#).

Hardware requirements

If you did not order the Bluetooth Connectivity Test product with a 4921 RF Shield, you need this product to install the associated backplane.

The 4489 Bluetooth Connectivity Test Package requires a 4400 Series Mobile Phone Tester.

The 3189 Bluetooth Connectivity Test Package requires a 3100 Mobile Fault Finder.

Setting up the hardware

- 1 If the Bluetooth Connectivity Test product did not come with a special backplane (including female RS-232 connectors) already installed in the 4921 RF Shield, proceed as follows:
 - a At the back of the 4921 RF Shield, unscrew the standard backplane (12 screws).

- b Detach the standard backplane and replace it by the special backplane with the RS-232 connectors. Ensure that the long end of the connector is at the top to ensure that the LEDs of the Bluetooth adapter are visible.

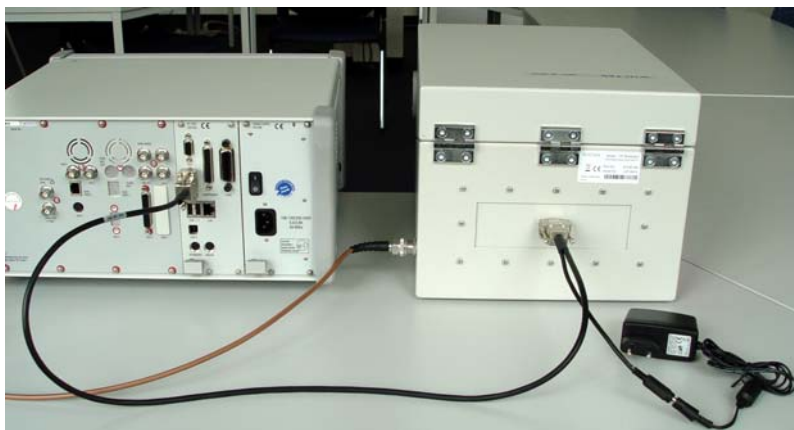


- c Fix the backplane by screwing it tight.



- 2 Connect the RS-232 cable as follows:
 - a Plug the connector with two cables into the RS-232 socket at the back of the 4921 RF Shield.
 - b If you are going to use the Bluetooth Connectivity Test product with a 3100 Mobile Fault Finder, plug the other D-type connector into the COM 1 port of the 3100.
If you are going to use the Bluetooth Connectivity Test product with a 4400 Series Mobile Phone Tester, plug the other D-type connector into the COM 1 port of the 4400.
If you are going to use Bluetooth Connectivity Test product with a PC, plug the other D-type connector into a free COM port of the PC.

- c Connect the AC/DC power converter to mains and to the remaining end of the RS-232 cable.



- 3 Plug the Bluetooth adapter into the D-type RS-232 connector inside the 4921 RF Shield.



Installing the software

4400 Mobile Phone Tester Series

If the 4489 Bluetooth Connectivity Test functionality is not already enabled in the 4400, enter the key code you received with the 4489 Bluetooth Connectivity Test Package in the **Tools > Configuration > Options > Option Key** menu of

the 4400.

For more detailed instructions, please refer to section "Installing additional options" in the 4400 user's guides.

Software drivers and application software for the 4489 Bluetooth Connectivity Test Package are integrated into the RAPID! Evaluation Test Software on the 4400 Series Mobile Phone Tester and also into the optional 7310 Lector software. For more detailed instructions, please refer to section "Installing new options in the 3100 Mobile Fault Finder" in the 7310 Lector user's guide.

3100 Mobile Fault Finder

If the 3189 Bluetooth Connectivity Test functionality is not already enabled in the 3100, enter the key code you received with the 3189 Bluetooth Connectivity Test Package in the **Options > Option Setting** menu of the Upgrade Utility within 7310 Lector.

Software drivers and application software for the 3189 Bluetooth Connectivity Test Package are integrated into 7310 Lector.

Using the Bluetooth Connectivity Test products with Lector or Scriptor

3

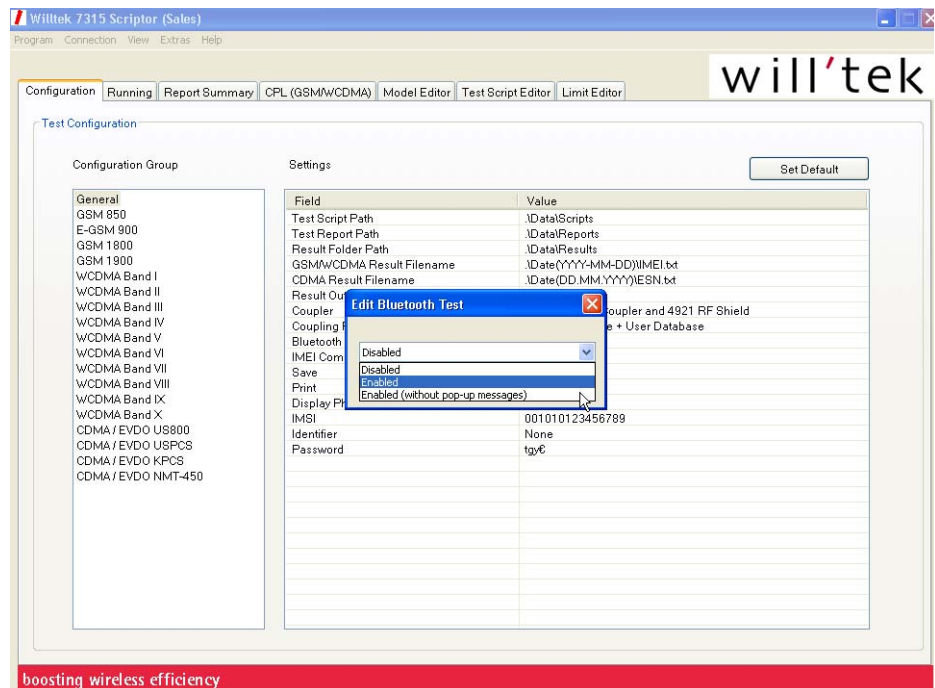
This chapter describes how to operate the Bluetooth Connectivity Test products with the Lector and Scriptor family of testing products and either the 4400 Series Mobile Phone Testers or the 3100 Mobile Fault Finder. Topics discussed in this chapter are as follows:

- ["Enabling and disabling Bluetooth tests in Lector and Scriptor" on page 12](#)
- ["Carrying out a Bluetooth test with Lector or Scriptor" on page 13](#)
- ["Troubleshooting Bluetooth tests with Lector and Scriptor" on page 13](#)

Enabling and disabling Bluetooth tests in Lector and Scriptor

Most of the Willtek-provided tests include a test sequence to check the Bluetooth device of the phone; you can include a Bluetooth check in your own test scripts with the BLUETOOTH command. This check requires the Bluetooth Connectivity Test Package to be installed in the instrument. Also, the Bluetooth check must be enabled in Lector or Scriptor. In order to have the test script actually carry out the Bluetooth test, proceed as follows:

- 1 In Lector or Scriptor, go to the Configuration tab.
- 2 Select Configuration Group **General**.
- 3 Set the **Bluetooth Test** parameter according to your requirements:
 - a If you do not want Bluetooth checks to be performed at any time, select **Disabled**.
 - b If you want Lector and Scriptor to perform the check and prompt a reminder to enable the Bluetooth feature in the phone before the Bluetooth test starts, select **Enable**.
 - c If you want Bluetooth tests to be performed without the message, select **Enabled (without pop-up messages)**.



Carrying out a Bluetooth test with Lector or Scriptor

This section explains how to carry out connectivity tests on the Bluetooth device integrated in wireless devices. See section ["Enabling and disabling Bluetooth tests in Lector and Scriptor" on page 12](#) on how to enable and disable this feature.

The Bluetooth test can be an integral part of the mobile phone test procedure. This requires the BLUETOOTH command (see the Test Command Reference section in the Lector and Scriptor user's guide) as part of the test script; users of 7315 Scriptor can check the script and add the command. Typically after a connection (a call) between the phone and the tester has been established, Lector will ask if you want to perform a Bluetooth.

Follow the onscreen instructions. In particular, make sure that

- the Willtek Bluetooth dongle is switched on
- the Bluetooth function in the mobile phone is enabled
- the Bluetooth visibility in the phone is enabled

After completing the mobile phone tests, Lector shows or prints a test protocol that includes the RF measurements as well as the results of the Bluetooth connectivity test.

If successful, the Bluetooth test result consists of the MAC address of the Bluetooth device and the device name. The device name should be identical to the one that is set up in the phone.

Troubleshooting Bluetooth tests with Lector and Scriptor

If a Bluetooth test fails, this is indicated by asterisks on the right-hand side of the results printout.

```
USB 1000 : 14.0, 17.0 / 14.0, 17.0 / 13.0, 14.0
GSM 900/1800
Speech Test .....: Pass
Bluetooth connect.....: ***** **
-----
TV ES... 0dBm MS... 5 TPR... 11 111 MW
```

Test failure may occur for different reasons. It may be either because the test setup is not suitable or because the Bluetooth device in the mobile phone is defective. Here are a few possibilities:

- The Bluetooth testing device is switched off.
Switch on the device in the 4921 RF Shield.
- The phone under test does not have a Bluetooth device.
Repeat the test, but do not request a Bluetooth connectivity test.
- The Bluetooth function in the phone is disabled.
Turn on the Bluetooth feature in the phone.

- The Bluetooth function is enabled, but the visibility is disabled.
Enable the Bluetooth visibility in the phone.
- There are other Bluetooth devices around that make communication difficult.
Close the RF Shield before starting the Bluetooth test.

If none of these conditions are met, the Bluetooth device in the phone may indeed be defective!

SCPI Commands

4

This chapter describes the commands and responses for remote control of the Bluetooth Connectivity Test solution from the 4400 or 3100. The commands and responses are described in this chapter are as follows:

- ["Configuration commands" on page 16](#)
- ["Status commands" on page 17](#)
- ["Control commands" on page 17](#)

Configuration commands

:BLUetooth:CONFIg:DEFault

Syntax	:BLUetooth:CONFIg:DEFault
Parameters	None.
Description	This command sets the Bluetooth adapter back to the original configuration.
Query	Not supported.
Example	:BLUetooth:CONFIg:DEFault

:BLUetooth:CONFIg:BAUD

Syntax	:BLUetooth:CONFIg:BAUD <int>
Parameters	int is the bit rate on the serial interface. The parameter may take on one of the following values: 9600, 19200, 38400, 57600, 115200. The default is 9600.
Description	This command sets the baud rate of the instrument (i.e. the 4400 or 3100) at the interface to the Bluetooth adapter. Sets the baud rate for serial port COM1 (the interface to the Bluetooth adapter). The other serial parameter settings are fixed at 8 bits per char, 1 stop bit, no parity.
Query	Not supported.
Example	:BLUetooth:CONFIg:BAUD 9600 Sets the baud rate at the serial interface to the Bluetooth adapter to 9600 bps. :BLU:CONF:BAUD? Returns the following string: "9600"

:BLUetooth:CONFIg:INQuiry:TIMEout

Syntax	:BLUetooth:CONFIg:INQuiry:TIMEout <int1>
Parameters	int1 is the timeout in seconds. int1 may take on an integer value from 1 to 30, the default is 4.
Description	This command sets the response timeout (in seconds) in which the device under test must respond to the inquiry from the instrument.
Query	Returns the current timeout setting.
Example	:BLUetooth:CONFIg:INQuiry:TIMEout 10 Sets the timeout to 10 seconds. :BLUetooth:CONFIg:INQuiry:TIMEout? Returns "10"

Status commands

:BLUetooth:STATus?

Syntax	:BLUetooth:STATus?
Parameters	None.
Description	This command allows the user to query the current status of the adapter.
Query	Returns one of the following strings, depending on the current status of the Bluetooth adapter: "ok", "error"
Example	:BLUetooth:STATus? Returns "ok<CR>"

:BLUetooth:STATus:INFormation?

Syntax	:BLUetooth:STATus:INFormation?
Parameters	None.
Description	This command allows the user to query the current state of the adapter.
Query	Returns one of the following strings, depending on the current status of the Bluetooth adapter: "standby", "pending", "connect"
Example	:BLUetooth:STATus:INFormation? Returns "standby"

Control commands

:BLUetooth:CONTRol:CANCel

Syntax	:BLUetooth:CONTRol:CANCel
Parameters	None.
Description	This command cancels the current operation being performed by the Bluetooth adapter.
Query	Not supported.
Example	:BLUetooth:CONTRol:CANCel

:BLUetooth:CONTRol:INQuiry?

Syntax	:BLUetooth:CONTRol:INQuiry?
Parameters	None.
Description	This command performs an inquiry for all Bluetooth devices within the range of the adapter.
Query	For each device found, returns a string as follows: <address> , <name> , <class> where address is the Bluetooth device address, name is the device name set by the user, class is the Bluetooth class of the device.
Example	:BLUetooth:CONTRol:INQuiry? Response: "0002EE12CF21, mobile, 847<CR>"

:BLUetooth:CONTRol:CONNect

Syntax	:BLUetooth:CONTRol:CONNect "<address>"
Parameters	address is the Bluetooth device address.
Description	This command sets up a connection between the specified address and the adapter. Depending if the command was successfully executed or not, the adapter will return either connect or error.
Query	Not supported.
Example	BLUetooth:CONTRol:CONNect "0002EE12CF21" Response: "connect 0002EE12CF21<CR>"

:BLUetooth:CONTRol:RELease

Syntax	:BLUetooth:CONTRol:RELease
Parameters	None.
Description	This command releases the connection between the DUT and the adapter. Once successful, the instrument will return a disconnect string.
Query	Not supported.
Example	:BLUetooth:CONTRol:RELease Reponse: "disconnect"

Direct access via RS-232

5

This chapter provides the commands and responses for direct control of the Bluetooth adapter. Topics discussed in this chapter are as follows:

- ["General" on page 20](#)
- ["Configuring the Bluetooth adapter" on page 20](#)
- ["Requesting device status information" on page 20](#)
- ["General control" on page 21](#)

General

The RS-232 commands should include a <CR> or <CR><LF> (carriage return, line feed characters) at the end of the line. The Bluetooth adapter returns strings with <CR><LF> at the end.

Configuring the Bluetooth adapter

AT+BTMODE

Syntax	AT+BTMODE , n
Function	Sets the operating mode of the Bluetooth adapter.
Response	OK
Description	<p>The Bluetooth adapter has four different operating modes. Depending on the operating mode currently set, the adapter behaves differently. The parameter n determines the mode.</p> <p>n=0: Mode 0 is the default configuration.</p> <p>n=1: In Mode 1, the adapter will try to set up a connection with the most recently connected Bluetooth adapter.</p> <p>n=2: In Mode 2, the adapter will wait for a connection setup from the most recently connected Bluetooth adapter.</p> <p>n=3: In Mode 3, the adapter will alternate between "Inquiry Scan" and "Page Scan".</p>

Requesting device status information

AT

Syntax	AT
Function	Checks the presence of the Bluetooth adapter.
Response	OK or ERROR
Description	In standard mode, you can check whether the Bluetooth adapter is connected to a host correctly by using this AT command.

AT+BTINFO

Syntax	AT+BTINFO?
Function	Returns the internal status of the Bluetooth adapter.
Response	<bd_addr> , <name> , <mode> , <status> , <auth> , <encryp> OK where bd_addr is the Bluetooth adapter address, name is the adapter name set by the user, mode is the operating mode, status is the operating status, auth is the authentication status (returns 1 when activated), encryp is the encryption status (returns 1 when activated).
Description	When you send this query to the Bluetooth adapter, the adapter returns its status and further information.

General control

AT+BTCANCEL

Syntax	AT+BTCANCEL
Function	Cancels the currently ongoing operation of the Bluetooth adapter.
Response	OK
Description	This command interrupts and stops the following commands: AT+BTSCAN, AT+ATD, AT+BTINQ?

AT+BTINQ

Syntax	AT+BTINQ?
Function	Lets the Bluetooth adapter search for other devices nearby.
Response	<address> , <name> , <class> <address> , <name> , <class> ...
Description	The enquiry process is carried out during the predefined time duration (30 seconds). The maximum number of enquiry results is 10.

ATD

Syntax	ATD <bd_addr>
Function	Sets up connection to the device in bd_addr, where bd_addr is the Bluetooth device address.
Response	OK CONNECT or OK ERROR
Description	This command is used to set up a connection with another Bluetooth device. The Bluetooth adapter tries for 5 minutes to connect with the Bluetooth device given by bd_addr. The connection setup fails when the Bluetooth device addressed is not in PAGE SCAN mode or already connected to another Bluetooth device.

ATH

Syntax	ATH
Function	Releases the current Bluetooth connection.
Response	OK DISCONNECT
Description	This AT command is used to disconnect the existing Bluetooth connection.

Warranty and Repair



This chapter describes the customer services available through Willtek. Topics discussed in this chapter include the following:

- ["Warranty information" on page 24](#)
- ["Equipment return instructions" on page 25](#)

Warranty information

Willtek warrants that all of its products conform to Willtek's published specifications and are free from defects in materials and workmanship for a period of one year from the date of delivery to the original buyer, when used under normal operating conditions and within the service conditions for which they were designed. This warranty is not transferable and does not apply to used or demonstration products.

In case of a warranty claim, Willtek's obligation shall be limited to repairing, or at its option, replacing without charge, any assembly or component (except batteries) which in Willtek's sole opinion proves to be defective within the scope of the warranty. In the event Willtek is not able to modify, repair or replace nonconforming defective parts or components to a condition as warranted within a reasonable time after receipt thereof, the buyer shall receive credit in the amount of the original invoiced price of the product.

It is the buyer's responsibility to notify Willtek in writing of the defect or nonconformity within the warranty period and to return the affected product to Willtek's factory, designated service provider, or authorized service center within thirty (30) days after discovery of such defect or nonconformity. The buyer shall prepay shipping charges and insurance for products returned to Willtek or its designated service provider for warranty service. Willtek or its designated service provider shall pay costs for return of products to the buyer.

Willtek's obligation and the customer's sole remedy under this hardware warranty is limited to the repair or replacement, at Willtek's option, of the defective product. Willtek shall have no obligation to remedy any such defect if it can be shown: (a) that the product was altered, repaired, or reworked by any party other than Willtek without Willtek's written consent; (b) that such defects were the result of customer's improper storage, mishandling, abuse, or misuse of the product; (c) that such defects were the result of customer's use of the product in conjunction with equipment electronically or mechanically incompatible or of an inferior quality; or (d) that the defect was the result of damage by fire, explosion, power failure, or any act of nature.

The warranty described above is the buyer's sole and exclusive remedy and no other warranty, whether written or oral, expressed or implied by statute or course of dealing shall apply. Willtek specifically disclaims the implied warranties of merchantability and fitness for a particular purpose. No statement, representation, agreement, or understanding, oral or written, made by an agent, distributor, or employee of Willtek, which is not contained in the foregoing warranty will be binding upon Willtek, unless made in writing and executed by an authorized representative of Willtek. Under no circumstances shall Willtek be liable for any direct, indirect, special, incidental, or consequential damages, expenses, or losses, including loss of profits, based on contract, tort, or any other legal theory.

Equipment return instructions

Please contact your local service center for Willtek products via telephone or web site for return or reference authorization to accompany your equipment. For each piece of equipment returned for repair, attach a tag that includes the following information:

- Owner's name, address, and telephone number.
- Serial number, product type, and model.
- Warranty status. (If you are unsure of the warranty status of your instrument, include a copy of the invoice or delivery note.)
- Detailed description of the problem or service requested.
- Name and telephone number of the person to contact regarding questions about the repair.
- Return authorization (RA) number or reference number.

If possible, return the equipment using the original shipping container and material. Additional Willtek shipping containers are available from Willtek on request. If the original container is not available, the unit should be carefully packed so that it will not be damaged in transit. Willtek is not liable for any damage that may occur during shipping. The customer should clearly mark the Willtek-issued RA or reference number on the outside of the package and ship it prepaid and insured to Willtek.

End-User License Agreement



B

This appendix describes the conditions for using the software.

All copyrights in and to the software product are owned by Willtek Communications or its licensors. The software is protected by copyright laws and international copyright treaties, as well as other intellectual property laws and treaties.

This end-user license agreement grants you the right to use the software contained in this product subject to the following restrictions. You may not:

- (i) use the software and/or any copy of the software in different computers concurrently, unless the software is an update that has been downloaded from the Internet at www.willtek.com;
- (ii) copy the software, except for archive purposes consistent with your standard archive procedures;
- (iii) transfer the software to a third party apart from the entire product;
- (iv) modify, decompile, disassemble, reverse engineer or otherwise attempt to derive the source code of the software;
- (v) export the software in contravention of applicable export laws and regulations of the country of purchase;
- (vi) use the software other than in connection with operation of the product.

The licensor's suppliers do not make or pass on to end users or any other third party, any express, implied or statutory warranty or representation on behalf of such suppliers, including but not limited to the implied warranties of noninfringement, title, merchantability or fitness for a particular purpose.

Willtek Communications shall not be held liable for any damages suffered or incurred by you or any other third party (including, but not limited to, general, special, consequential or incidental damages including damages for loss of business profits, business interruption, loss of business information and the like), arising out of or in connection with the delivery, use or performance of the software.

Publication History

Revision	Comment
0607-100-A	First version.
0609-100-A	SCPI commands updated.
0710-200-A	Adapted to Lector and Scriptor product family.

Willtek and its logo are trademarks of Willtek Communications GmbH. All other trademarks and registered trademarks are the property of their respective owners.

Specifications, terms and conditions are subject to change without notice.

© Copyright 2007 Willtek Communications GmbH. All rights reserved.

No part of this manual may be reproduced or transmitted in any form or by any means (printing, photocopying or any other method) without the express written permission of Willtek Communications GmbH.

Manual ident no.
M 292 018
Manual version
0710-200-A
English

Willtek Communications GmbH
85737 Ismaning
Germany
Tel: +49 (0) 89 996 41-0
Fax: +49 (0) 89 996 41-440
info@willtek.com

Willtek Communications UK
Cheadle Hulme
United Kingdom
Tel: +44 (0) 161 486 3353
Fax: +44 (0) 161 486 3354
willtek.uk@willtek.com

Willtek Communications SARL
Roissy
France
Tel: +33 (0) 1 72 02 30 30
Fax: +33 (0) 1 49 38 01 06
willtek.fr@willtek.com

Willtek Communications Inc.
Parsippany
USA
Tel: +1 973 386 9696
Fax: +1 973 386 9191
willtek.cala@willtek.com
sales.us@willtek.com

Willtek Communications
Singapore
Asia Pacific
Tel: +65 6827 9670
Fax: +65 6827 9601
willtek.ap@willtek.com

Willtek Communications Ltd.
Shanghai
China
Tel: +86 21 5835 8039
Fax: +86 21 5835 5238
willtek.cn@willtek.com

© Copyright 2007 Willtek Communications GmbH. All rights reserved.
Willtek Communications, Willtek and its logo are trademarks of Willtek Communications GmbH. All other trademarks and registered trademarks are the property of their respective owners.

Note: Specifications, terms and conditions are subject to change without prior notice.

will'tek